

## MS Flashing

The **MS Flashing** is an integrated roof attachment designed for installing the Mounting Systems Alpha+ and Element PV racking system on composition shingle roofs. The **MS Flashing's** proprietary design ensures excellent long-term durability and leak-free reliability with active water divergence to protect roof penetrations from water. Its 8 mm bolt connection provides a highly versatile component for Element and Alpha+ mounting systems. Its simple, proven design makes installation fast, easy, and exceptionally economical.

### MS Flashing L-Foot Kit

The **MS Flashing L-Foot Kit** is the perfect complement to the Alpha+ mounting system. In addition to the benefits and features of the standard MS Flashing, the **MS Flashing L-Foot Kit** includes all components necessary to connect to the Alpha+ on-roof system for a complete and resilient system: flashing, L-foot, lag bolt, and t-bolt.

### MS Flashing Slider Kit

Building off the MS Flashing L-Foot Kit, the **MS Flashing Slider Kit** enhances speed and adjustability of the Alpha+ system for shared rail configuration through the convenience of a slider, increasing North-South adjustability and expediting the installation process.



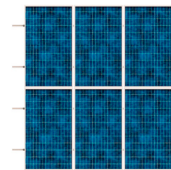
On-roof



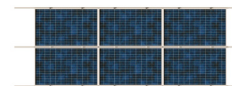
Comp  
shingle



Shared  
rail



Standard Rail Configuration

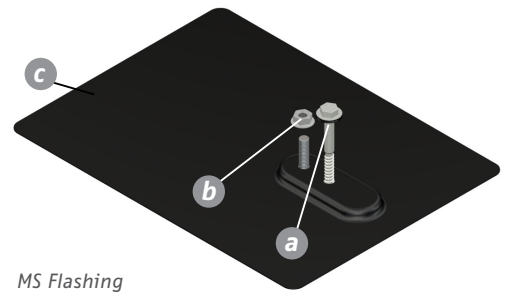


Shared Rail Configuration



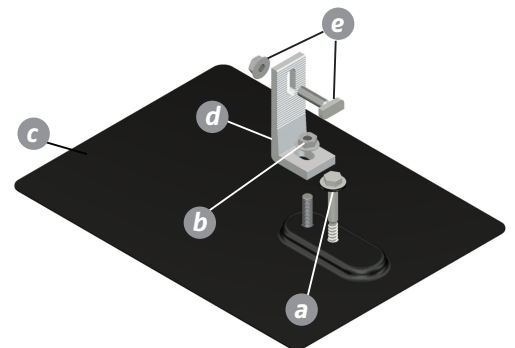
**mounting  
systems**

<b>Application</b>	Composition shingle roofs
<b>Roof attachment</b>	5/16" x 4" hex lag screw
<b>Rail attachment</b>	Alpha+ L-foot with M8 T-bolt, serrated flange nut
<b>Sealing</b>	Neoprene Rubber/ EPDM bonded washer
<b>Flashing dimensions</b>	12 x 8 x 0.040 in. / 305 x 203 x 1 mm
<b>MS Flashing Slider Kit adjustment range</b>	± 3 in. / 44 mm
<b>Flashing material</b>	3003 or 5052 Aluminum
<b>Hardware</b>	300-Series stainless steel
<b>Flashing Finish</b>	Black finish
<b>Part Number</b>	712-0192 MS Flashing 712-0193 MS Flashing L-Foot Kit 712-0194 MS Flashing Slider Kit
<b>Warranty</b>	10 years <sup>1</sup>



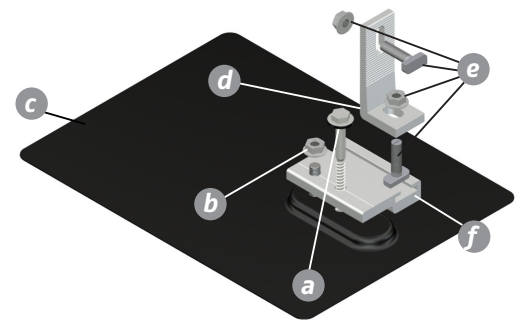
**MS Flashing**

- a** 5/16" x 4" Lag screw with EPDM Bonded Washer
- b** M8 Flange nut (pre-assembled)
- c** MS Flashing



**MS Flashing L-Foot Kit**

- a** 5/16" x 4" Lag screw with EPDM Bonded Washer
- b** M8 Flange nut (pre-assembled)
- c** MS Flashing
- d** L -Foot
- e** M8 x 25mm T-bolt & M8 nut (pre-assembled)



**MS Flashing Slider Kit**

- a** 5/16" x 4" Lag screw with EPDM Bonded Washer
- b** M8 Flange nut (pre-assembled)
- c** MS Flashing
- d** L -Foot
- e** M8 x 25mm T-bolt & M8 nut (pre-assembled)
- f** Slider

<sup>1</sup> For details, please consult Mounting Systems, Inc. full warranty document, available upon request.